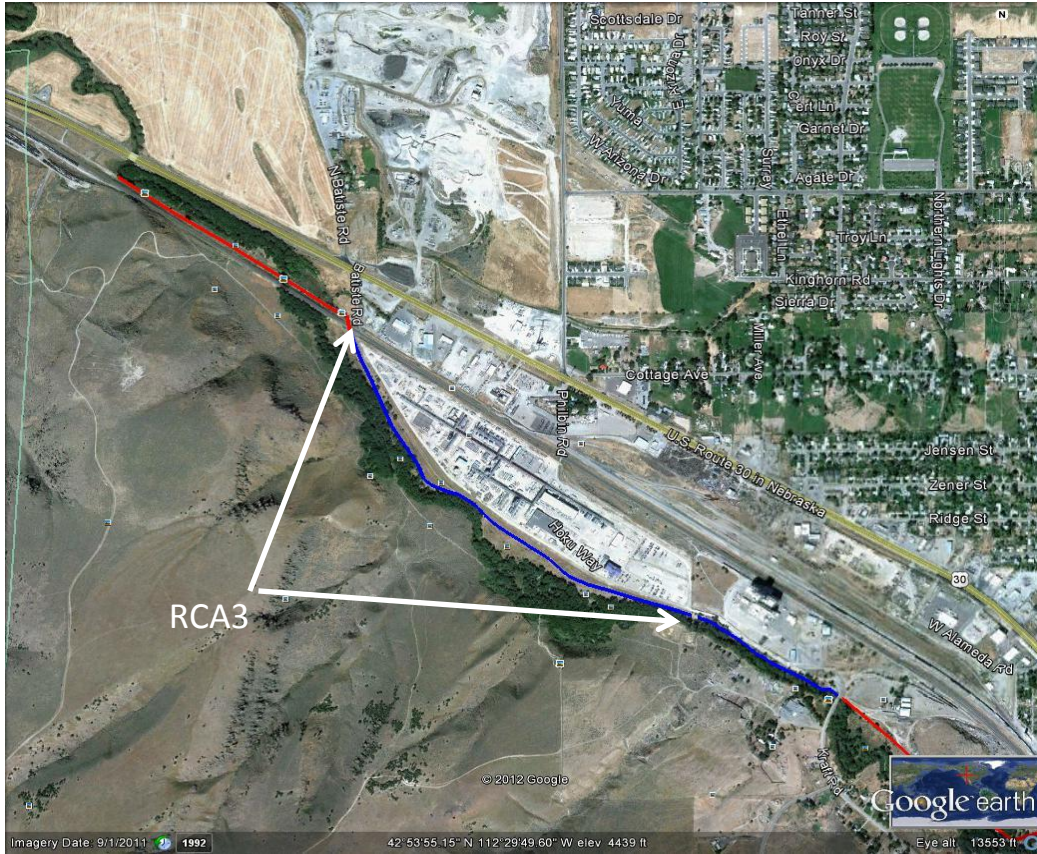


RCA3 Simplot



The Simplot reach extends from the railroad tracks on the north end behind the Hoku Plant to the north end of the Abrazewski Reach on the north end of the Great Western Malting Plant.

Length (mi)

0.93

Priority

C

Total Cost \$

172,800

Detailed Cost Breakdown

R/W Cost	\$	9,018
Clearing	\$	11,273
Earthwork	N/A	
Grading	\$	3,945
Gravel	\$	60,950
Paving	\$	74,761
Large Bridges	N/A	
Small Bridges	N/A	
Retaining Walls	N/A	
Fencing	N/A	
Safety Barrier	N/A	
Signing	\$	2,000
Landscaping	\$	10,822
Trailhead	N/A	

Recommendations:

This segment is complete

Maintenance Recommendations:

0