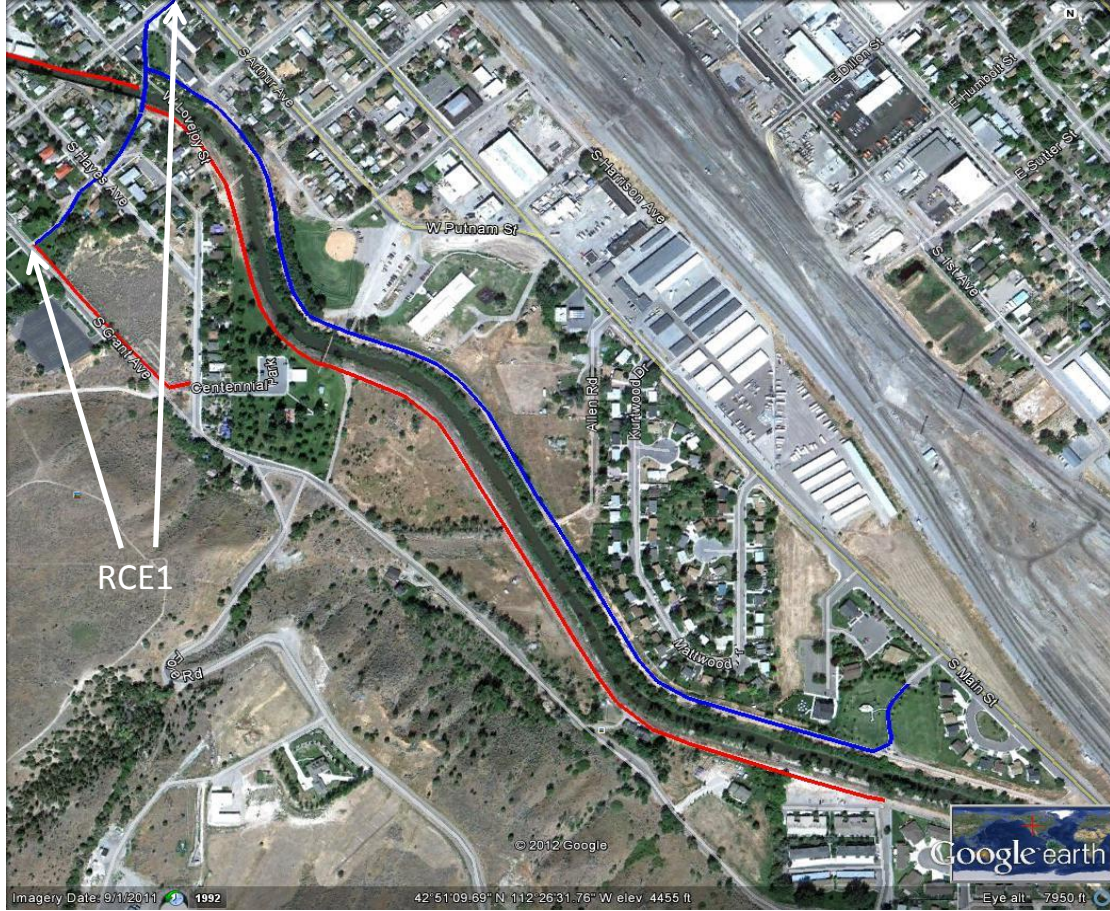


RCE1 Pre-history to Grant



This existing section of trail begins at Pre-history Park, crosses the river and continues to Grant Street.

Length (mi)

0.12

RCE1 Prehistory to Grant

Priority

C

Total Cost \$

524,000

Detailed Cost Breakdown

R/W Cost	\$	1,164
Clearing	\$	1,455
Earthwork	N/A	
Grading	\$	509
Gravel	\$	7,864
Paving	\$	9,647
Large Bridges	\$	500,000
Small Bridges	N/A	
Retaining Walls	N/A	
Fencing	N/A	
Safety Barrier	N/A	
Signing	\$	2,000
Landscaping	\$	1,396
Trailhead	N/A	

Recommendations:

This segment is complete

Maintenance Recommendations:

0