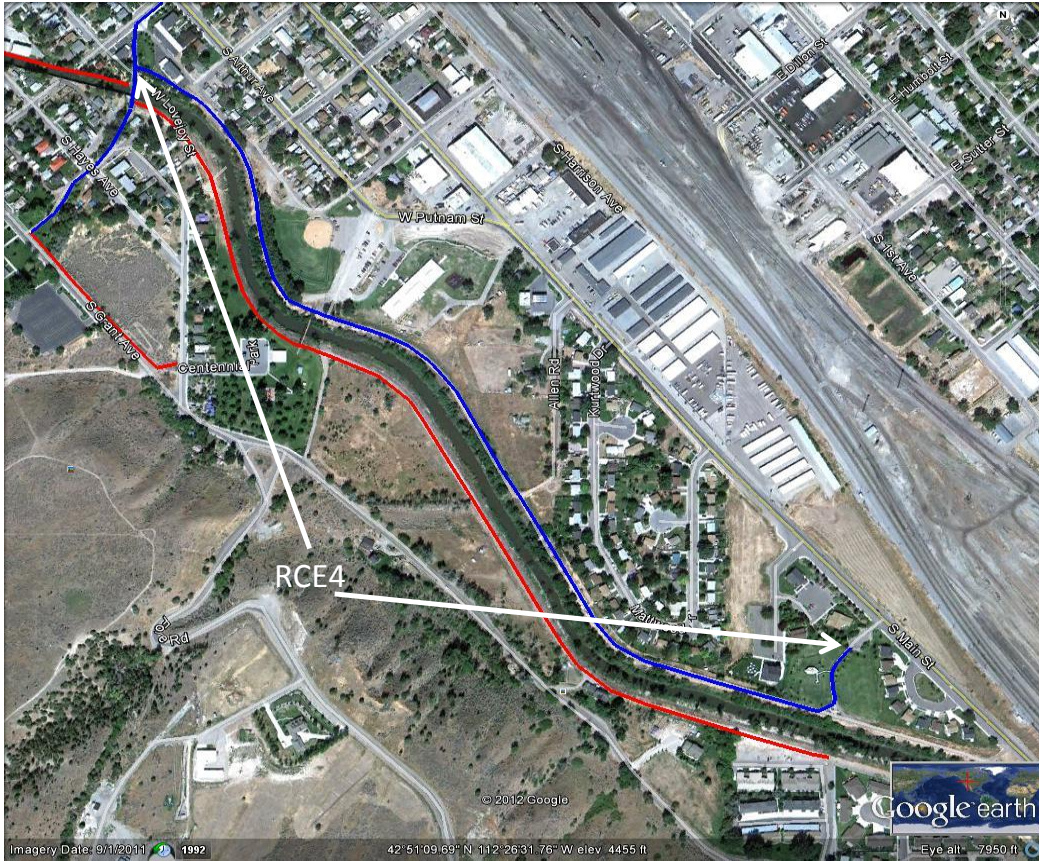


RCE4 Pre-History to Taysom (east side)



This existing segment of trail begins at Holiday Street and extends upstream along the east side of the river across to Taysom Rotary Park.

Length (mi)

0.82

Priority C
 Total Cost \$ 146,600

Detailed Cost Breakdown

R/W Cost	\$	7,952
Clearing	N/A	
Earthwork	N/A	
Grading	\$	3,479
Gravel	\$	53,741
Paving	\$	65,918
Large Bridges	N/A	
Small Bridges	N/A	
Retaining Walls	N/A	
Fencing	N/A	
Safety Barrier	N/A	
Signing	\$	2,000
Landscaping	\$	9,542
Trailhead	\$	4,000

Recommendations:

This segment is complete

Maintenance Recommendations:

0